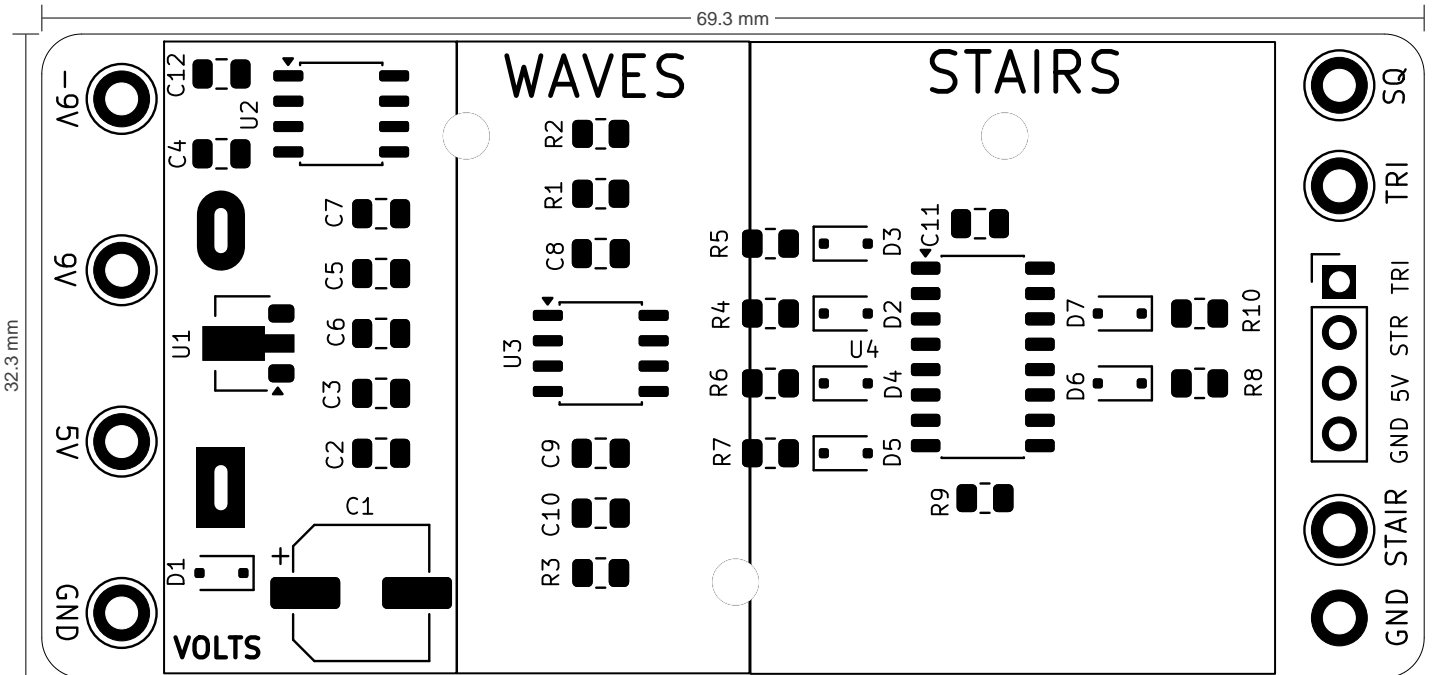


util-curve tracer

Revision 1.0 · April 25, 2026

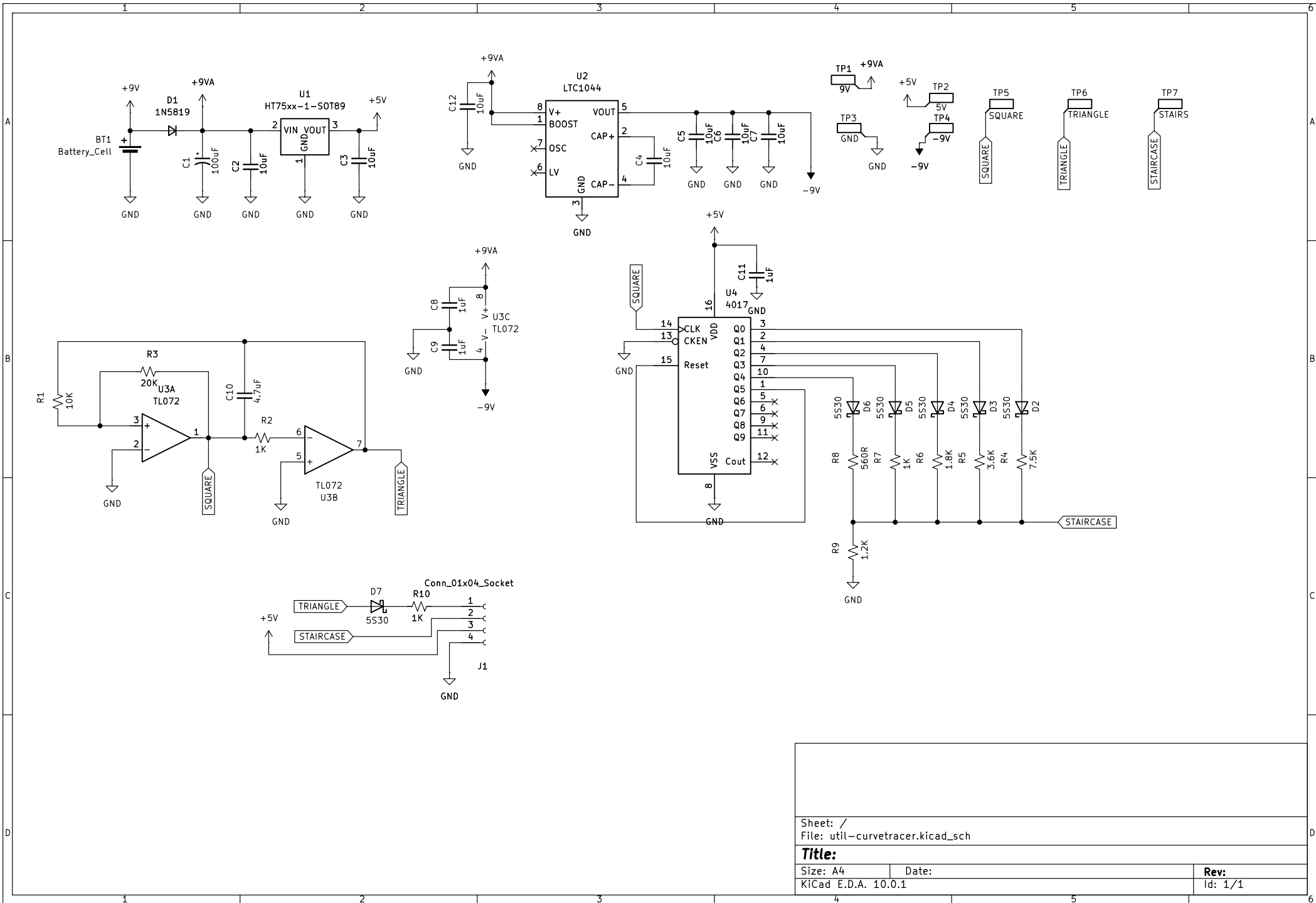


util-curve tracer

Parts List

LOCATION	VALUE	TYPE	NOTES
BT1	Battery_Cell	Single-cell battery	
C1	100uF	Polarized capacitor, small US symbol	
C2	10uF	Unpolarized capacitor, small symbol	
C3	10uF	Unpolarized capacitor, small symbol	
C4	10uF	Unpolarized capacitor, small symbol	
C5	10uF	Unpolarized capacitor, small symbol	
C6	10uF	Unpolarized capacitor, small symbol	
C7	10uF	Unpolarized capacitor, small symbol	
C8	1uF	Unpolarized capacitor, small symbol	
C9	1uF	Unpolarized capacitor, small symbol	
C10	4.7uF	Unpolarized capacitor, small symbol	
C11	1uF	Unpolarized capacitor, small symbol	
C12	10uF	Unpolarized capacitor, small symbol	
D1	1N5819	Diode, small symbol	
D2	5S30	Schottky diode	
D3	5S30	Schottky diode	
D4	5S30	Schottky diode	
D5	5S30	Schottky diode	
D6	5S30	Schottky diode	
D7	5S30	Schottky diode	
R1	10K	Resistor, small US symbol	
R2	1K	Resistor, small US symbol	
R3	20K	Resistor, small US symbol	
R4	7.5K	Resistor, small US symbol	
R5	3.6K	Resistor, small US symbol	
R6	1.8K	Resistor, small US symbol	
R7	1K	Resistor, small US symbol	
R8	560R	Resistor, small US symbol	
R9	1.2K	Resistor, small US symbol	
R10	1K	Resistor, small US symbol	
TP1	9V	test point (alternative flag-style design)	
TP2	5V	test point (alternative flag-style design)	

LOCATION	VALUE	TYPE	NOTES
TP3	GND	test point (alternative flag-style design)	
TP4	-9V	test point (alternative flag-style design)	
TP5	SQ	test point (alternative flag-style design)	
TP6	TRI	test point (alternative flag-style design)	
TP7	STAIR	test point (alternative flag-style design)	
U1	HT75xx-1-SOT89	100mA Low Dropout Voltage Regulator, Fixed Output, SOT89	
U2	LTC1044	Switched Capacitor Voltage Converter, 1.5V to 9V supply operation, 200uA Max No Load Supply Current at 5V, DIP-8/TO-99	
U3	TL072	Dual Low-Noise JFET-Input Operational Amplifiers, DIP-8/SOIC-8	
U4	4017	Johnson Counter (10 outputs)	



Sheet: /
 File: util-curvetracer.kicad_sch

Title:

Size: A4 Date:

KiCad E.D.A. 10.0.1

Rev:
 Id: 1/1