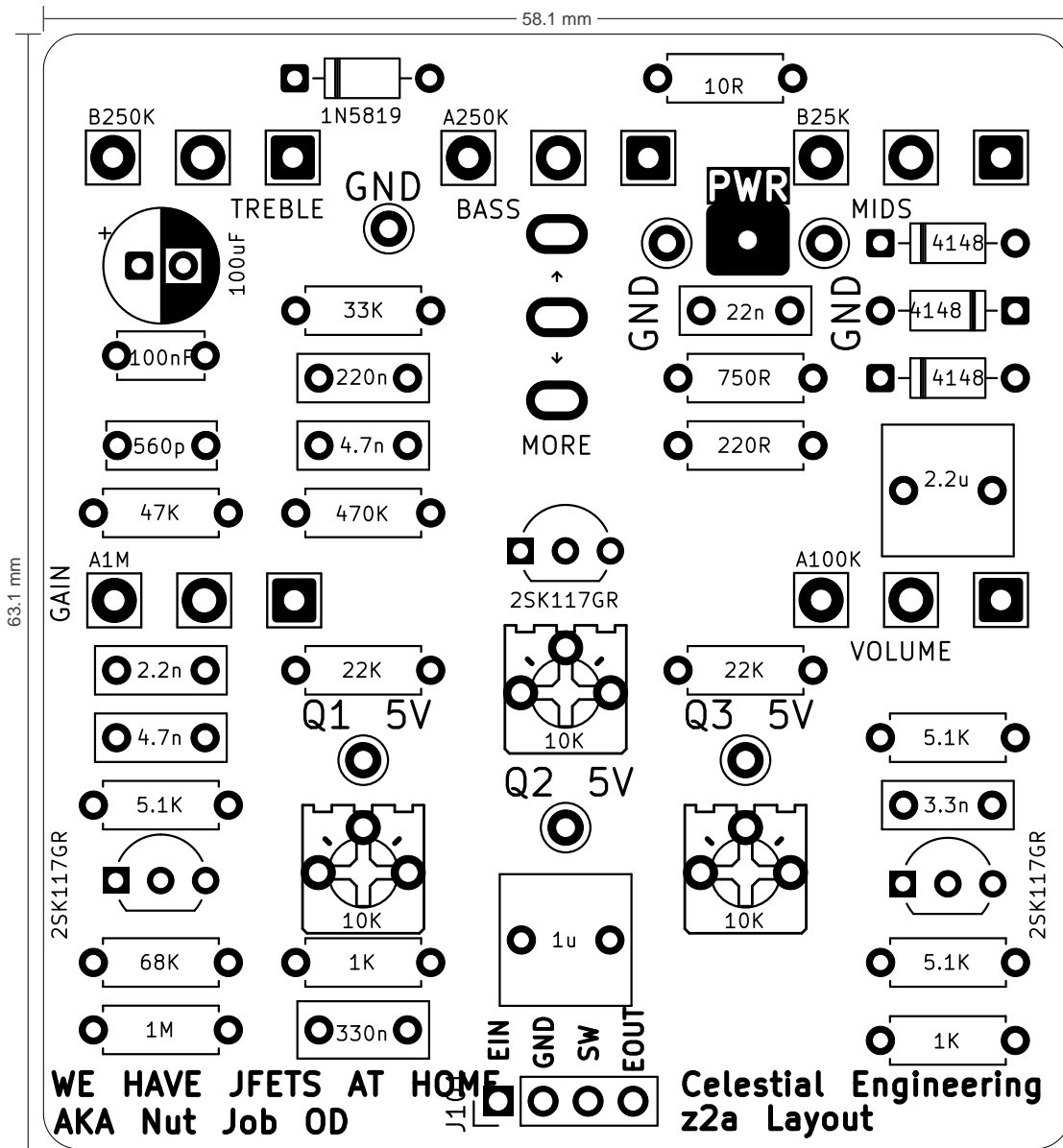


Nut Job OD

Chuck D Bones
Revision 1.0 · April 30, 2026



External Controls

- GAIN (A1M)
- TREBLE (B250K)
- BASS (A250K)
- MIDS (B25K)
- VOLUME (A100K)
- MORE (SW_SPDT)

Internal Controls

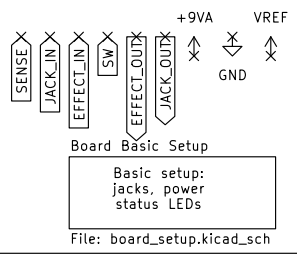
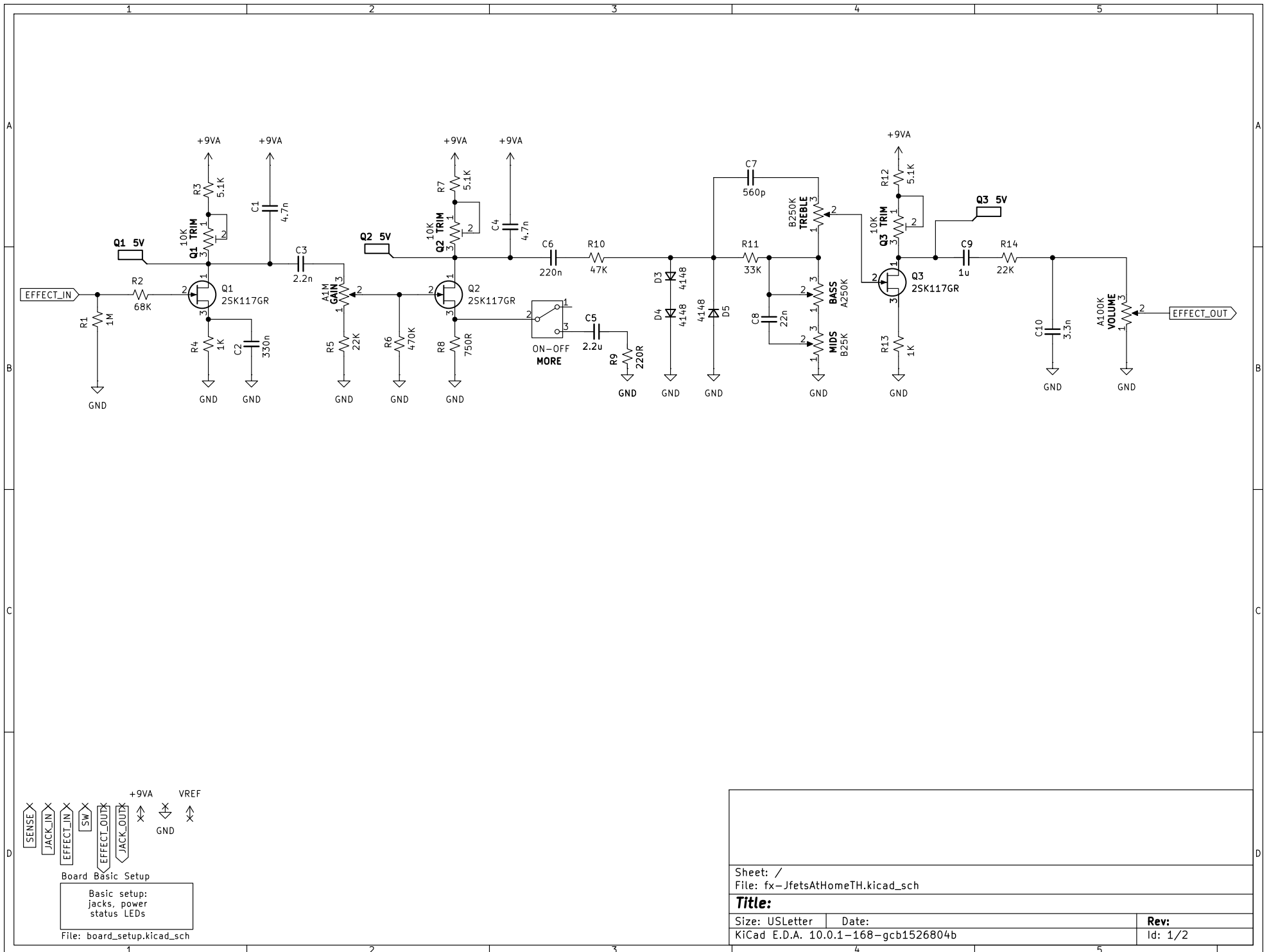
- Q1 TRIM (10K)
- Q2 TRIM (10K)
- Q3 TRIM (10K)

Nut Job OD

Parts List

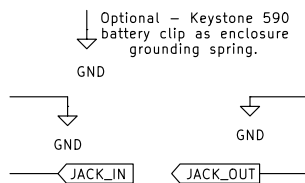
LOCATION	VALUE	TYPE	NOTES
C1	4.7n	Unpolarized capacitor, small symbol	
C2	330n	Unpolarized capacitor, small symbol	
C3	2.2n	Unpolarized capacitor, small symbol	
C4	4.7n	Unpolarized capacitor, small symbol	
C5	2.2u	Unpolarized capacitor, small symbol	
C6	220n	Unpolarized capacitor, small symbol	
C7	560p	Unpolarized capacitor, small symbol	
C8	22n	Unpolarized capacitor, small symbol	
C9	1u	Unpolarized capacitor, small symbol	
C10	3.3n	Unpolarized capacitor, small symbol	
C101	100uF	Polarized capacitor, small US symbol	
C102	100nF	Unpolarized capacitor, small symbol - X7R MLCC	
D3	4148	Diode, small symbol	
D4	4148	Diode, small symbol	
D5	4148	Diode, small symbol	
D101	1N5819	Diode	
J101	Conn_01x08_Pin	Generic connector, single row, 01x04, script generated	
Q1	2SK117GR	N-JFET transistor, drain/gate/source	
Q2	2SK117GR	N-JFET transistor, drain/gate/source	
Q3	2SK117GR	N-JFET transistor, drain/gate/source	
R1	1M	Resistor, small US symbol	
R2	68K	Resistor, small US symbol	
R3	5.1K	Resistor, small US symbol	
R4	1K	Resistor, small US symbol	
R5	22K	Resistor, small US symbol	
R6	470K	Resistor, small US symbol	
R7	5.1K	Resistor, small US symbol	
R8	750R	Resistor, small US symbol	
R9	220R	Resistor, small US symbol	
R10	47K	Resistor, small US symbol	
R11	33K	Resistor, small US symbol	

LOCATION	VALUE	TYPE	NOTES
R12	5.1K	Resistor, small US symbol	
R13	1K	Resistor, small US symbol	
R14	22K	Resistor, small US symbol	
R101	10R	Resistor, small US symbol	
TP107	TestPoint_Flag	Q1 5V	
TP108	TestPoint_Flag	Q2 5V	
TP109	TestPoint_Flag	Q3 5V	
BASS	A250K	Potentiometer, US symbol	
GAIN	A1M	Potentiometer, US symbol	
GND	TestPoint_Flag	test point (alternative flag-style design)	
GND	TestPoint_Flag	test point (alternative flag-style design)	
GND	TestPoint_Flag	test point (alternative flag-style design)	
MIDS	B25K	Potentiometer, US symbol	
MORE	SW_SPDT	ON-OFF	
PWR	TestPoint_Flag	test point (alternative flag-style design)	
Q1 TRIM	10K	Trim-potentiometer, US symbol	
Q2 TRIM	10K	Trim-potentiometer, US symbol	
Q3 TRIM	10K	Trim-potentiometer, US symbol	
TREBLE	B250K	Potentiometer, US symbol	
VOLUME	A100K	Potentiometer, US symbol	

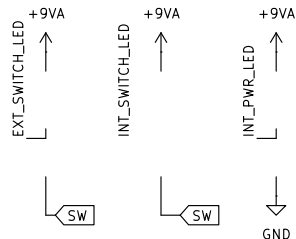


Sheet: /	
File: fx-JfetsAtHomeTH.kicad_sch	
Title:	
Size: USLetter	Date:
KiCad E.D.A. 10.0.1-168-gcb1526804b	Rev:
	Id: 1/2

Physical Connections –
Audio Jacks, enclosure
ground connection

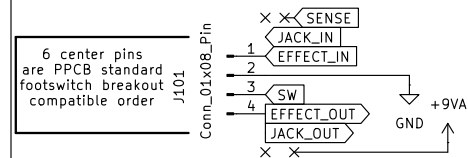


Status LEDs



I/O Setup

Only the 6 center pins are needed if there are no status LEDs on the daughterboard (i.e. all external status LEDs are on the main PCB) – can replace with 01x06 PinHeader footprint if so.



SENSE [Optional] Can connect to LFO/etc to drive a second LED on a daughterboard that supports it. Active High.

JACK_IN Audio In from the jacks. Connected to EFFECT_IN when footswitch is engaged, or JACK_OUT when in bypass.

EFFECT_IN Input to the PCB. Connected to JACK_IN when footswitch is engaged.

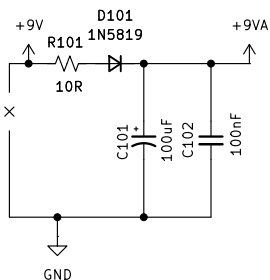
SW Connected to GND when effect is engaged. Usually used to drive the "effect on" status LED.

EFFECT_OUT Output of the PCB. Connected to JACK_OUT when footswitch is engaged.

JACK_OUT Audio out to the jacks. Connected to EFFECT_OUT when the footswitch is engaged, or JACK_IN when in bypass.

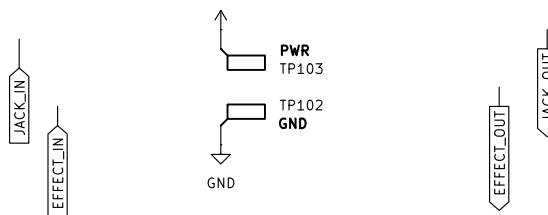
+9VA Connected to pedal VIN to power onboard status LEDs on daughterboard (if necessary).

Power Section – Reverse polarity
protection, filtering, and a 1/2 VCC
VREF.



Test Points

Can be used to power and test a PCB without soldering on the jacks/footswitch.



Optional – test loop pins.
Can populate with ronghe/keystone 5000 like C5199803, leave as a PTH, or delete.

Sheet: /Board Basic Setup/
File: board_setup.kicad_sch

Title:

Size: USLetter

Date:

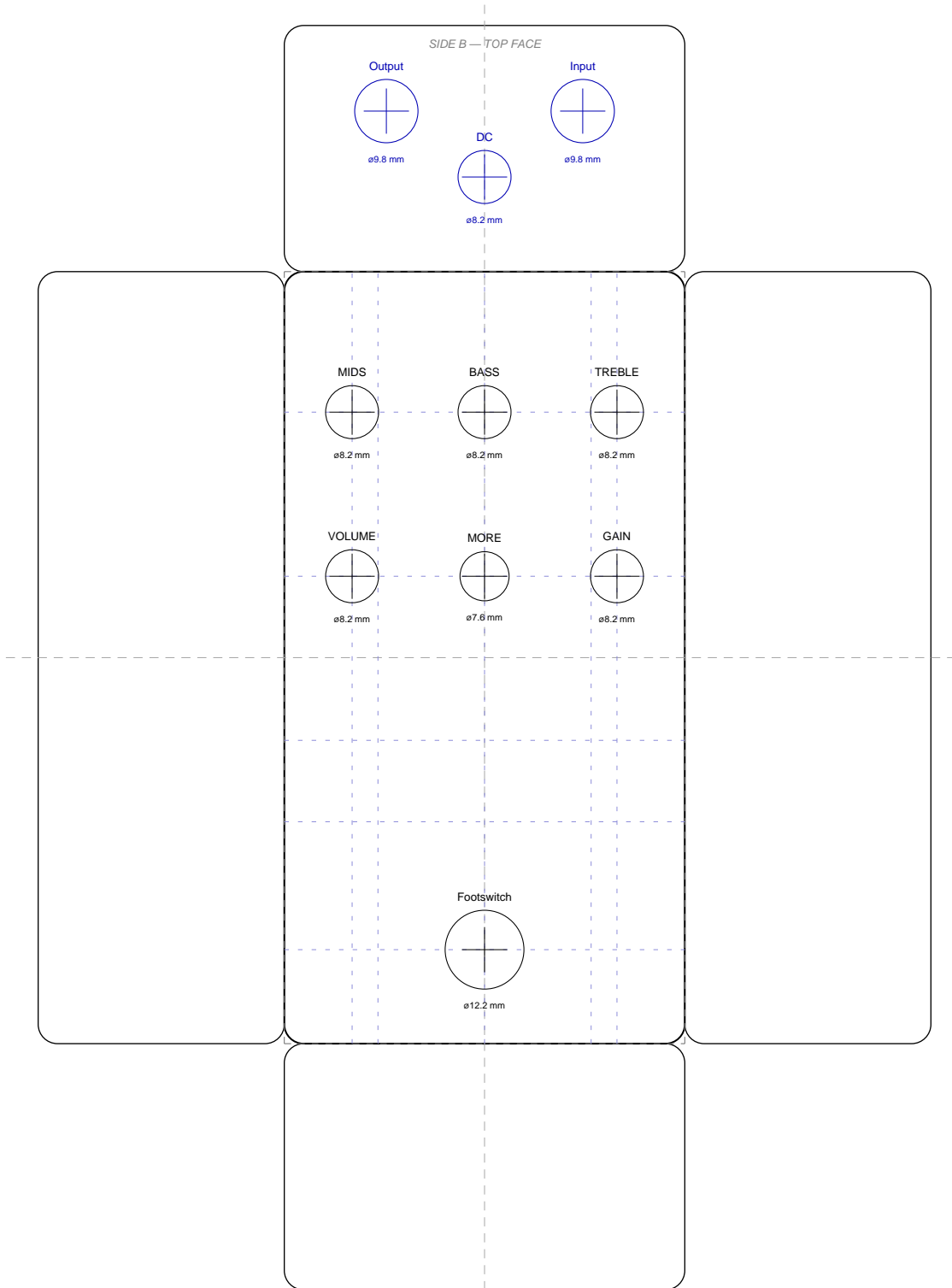
KiCad E.D.A. 10.0.1-168-gcb1526804b

Rev:

Id: 2/2

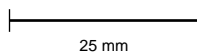
Nut Job OD — Enclosure Drilling Template

125B (62x120 mm) enclosure



PRINT AT 100% — DO NOT SCALE

macOS: Print → Scale: 100% • Verify scale bar below measures exactly 25 mm before drilling



Nut Job OD

Tayda Drill Manifest — 125B (62x120 mm)

X/Y are mm from the centre of each face (positive Y = toward front). Side A = front face. Side B = top face. Side C = left face (rotated -R enclosures).

SIDE	DIAMETER (mm)	X (mm)	Y (mm)	LABEL
A	8.2	20.5	38.0	TREBLE
A	8.2	0.0	38.0	BASS
A	8.2	-20.5	38.0	MIDS
A	7.6	0.0	12.6	MORE
A	8.2	-20.5	12.6	VOLUME
A	8.2	20.5	12.6	GAIN
A	12.2	0.0	-45.2	Footswitch
B	8.2	0.0	4.4	DC
B	9.8	-15.2	-5.8	Output
B	9.8	15.2	-5.8	Input