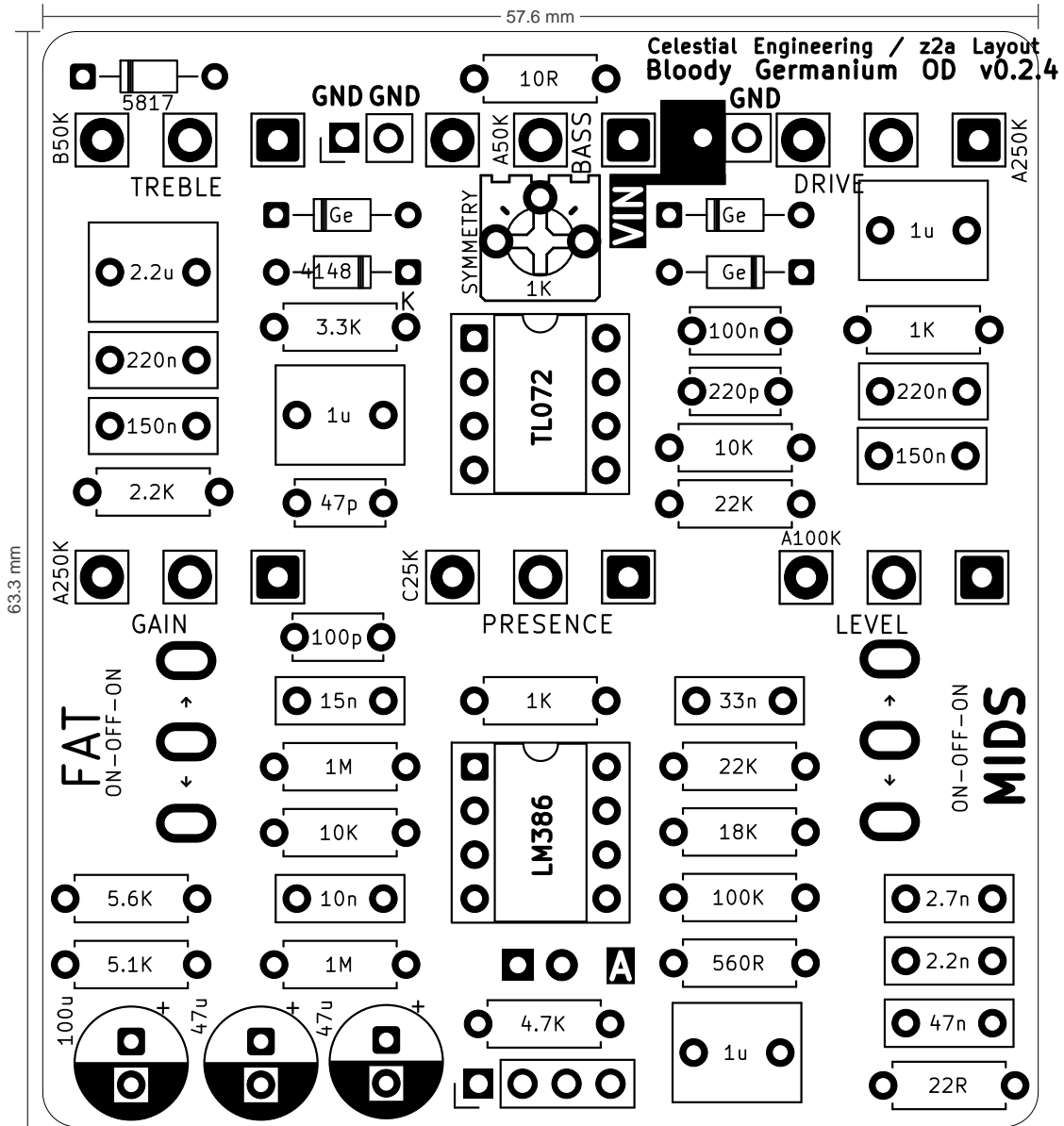


# Bloody Germanium Overdrive

Chuck D. Bones  
Revision 1.0.1 · April 23, 2026



## External Controls

- PRESENCE (C25K)
- GAIN (A250K)
- BASS (A50K)
- LEVEL (A100K)
- DRIVE (A250K)
- FAT (ON-OFF-ON)

• TREBLE (B50K)

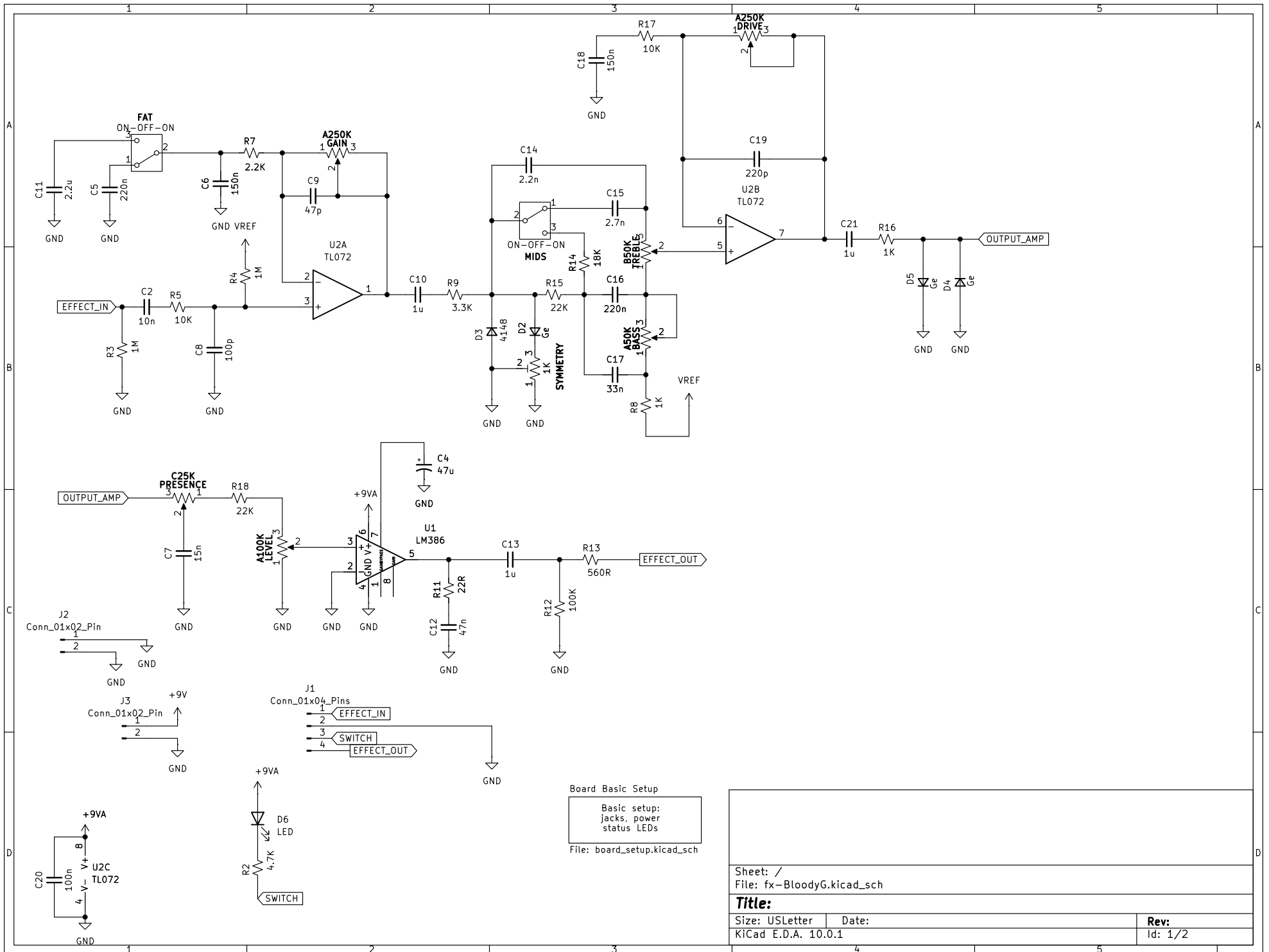
• MIDS (ON-OFF-ON)

# Bloody Germanium Overdrive

## Parts List

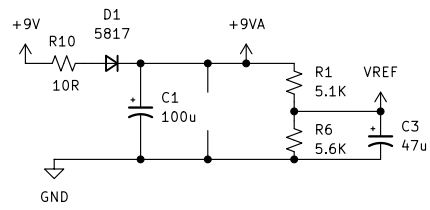
| LOCATION | VALUE           | TYPE   | NOTES |
|----------|-----------------|--|-------|
| C1       | 100u            | Aluminum Electrolytic                                  |       |
| C2       | 10n             | Box Film Cap   |       |
| C3       | 47u             | Aluminum Electrolytic                                  |       |
| C4       | 47u             | Aluminum Electrolytic                                  |       |
| C5       | 220n            | Box Film Cap   |       |
| C6       | 150n            | Box Film Cap   |       |
| C7       | 15n             | Box Film Cap   |       |
| C8       | 100p            | Ceramic / MLCC   |       |
| C9       | 47p             | Ceramic / MLCC   |       |
| C10      | 1u              | Box Film Cap   |       |
| C11      | 2.2u            | Box Film Cap   |       |
| C12      | 47n             | Box Film Cap   |       |
| C13      | 1u              | Box Film Cap   |       |
| C14      | 2.2n            | Box Film Cap   |       |
| C15      | 2.7n            | Box Film Cap   |       |
| C16      | 220n            | Box Film Cap   |       |
| C17      | 33n             | Box Film Cap   |       |
| C18      | 150n            | Box Film Cap   |       |
| C19      | 220p            | Ceramic / MLCC   |       |
| C20      | 100n            | MLCC (Filtering)                                       |       |
| C21      | 1u              | Box Film Cap   |       |
| D1       | 5817            | DO-41 Schottky   |       |
| D2       | Ge              | Germanium Mojo   |       |
| D3       | 4148            | DO-35  |       |
| D4       | Ge              | Germanium Mojo   |       |
| D5       | Ge              | Germanium Mojo   |       |
| D6       | LED             | 5mm LED  |       |
| J1       | Conn_01x04_Pins | Generic connector, single row, 01x04, script generated |       |
| J2       | Conn_01x02_Pin  | Connector / Jack                                       |       |
| J3       | Conn_01x02_Pin  | Connector / Jack                                       |       |
| R1       | 5.1K            | Metal Film Resistor, 1/4W                              |       |

| LOCATION | VALUE     | TYPE                             | NOTES |
|----------|-----------|----------------------------------|-------|
| R2       | 4.7K      | Metal Film Resistor, 1/4W        |       |
| R3       | 1M        | Metal Film Resistor, 1/4W        |       |
| R4       | 1M        | Metal Film Resistor, 1/4W        |       |
| R5       | 10K       | Metal Film Resistor, 1/4W        |       |
| R6       | 5.6K      | Metal Film Resistor, 1/4W        |       |
| R7       | 2.2K      | Metal Film Resistor, 1/4W        |       |
| R8       | 1K        | Metal Film Resistor, 1/4W        |       |
| R9       | 3.3K      | Metal Film Resistor, 1/4W        |       |
| R10      | 10R       | Metal Film Resistor, 1/4W        |       |
| R11      | 22R       | Metal Film Resistor, 1/4W        |       |
| R12      | 100K      | Metal Film Resistor, 1/4W        |       |
| R13      | 560R      | Metal Film Resistor, 1/4W        |       |
| R14      | 18K       | Metal Film Resistor, 1/4W        |       |
| R15      | 22K       | Metal Film Resistor, 1/4W        |       |
| R16      | 1K        | Metal Film Resistor, 1/4W        |       |
| R17      | 10K       | Metal Film Resistor, 1/4W        |       |
| R18      | 22K       | Metal Film Resistor, 1/4W        |       |
| U1       | LM386     | Audio Amplifier                  |       |
| U2       | TL072     | JFET Op-Amp                      |       |
| BASS     | A50K      | Potentiometer, US symbol         |       |
| DRIVE    | A250K     | Potentiometer, US symbol         |       |
| FAT      | ON-OFF-ON | Switch, single pole double throw |       |
| GAIN     | A250K     | Potentiometer, US symbol         |       |
| LEVEL    | A100K     | Potentiometer, US symbol         |       |
| MIDS     | ON-OFF-ON | Switch, single pole double throw |       |
| PRESENCE | C25K      | Potentiometer, US symbol         |       |
| SYMMETRY | 1K        | Trim-potentiometer, US symbol    |       |
| TREBLE   | B50K      | Potentiometer, US symbol         |       |



Board Basic Setup  
 Basic setup:  
 jacks, power  
 status LEDs  
 File: board\_setup.kicad\_sch

|                            |          |
|----------------------------|----------|
| Sheet: /                   |          |
| File: fx-BloodyG.kicad_sch |          |
| <b>Title:</b>              |          |
| Size: USLetter             | Date:    |
| KiCad E.D.A. 10.0.1        | Rev: 1/2 |



Sheet: /Board Basic Setup/  
 File: board\_setup.kicad\_sch

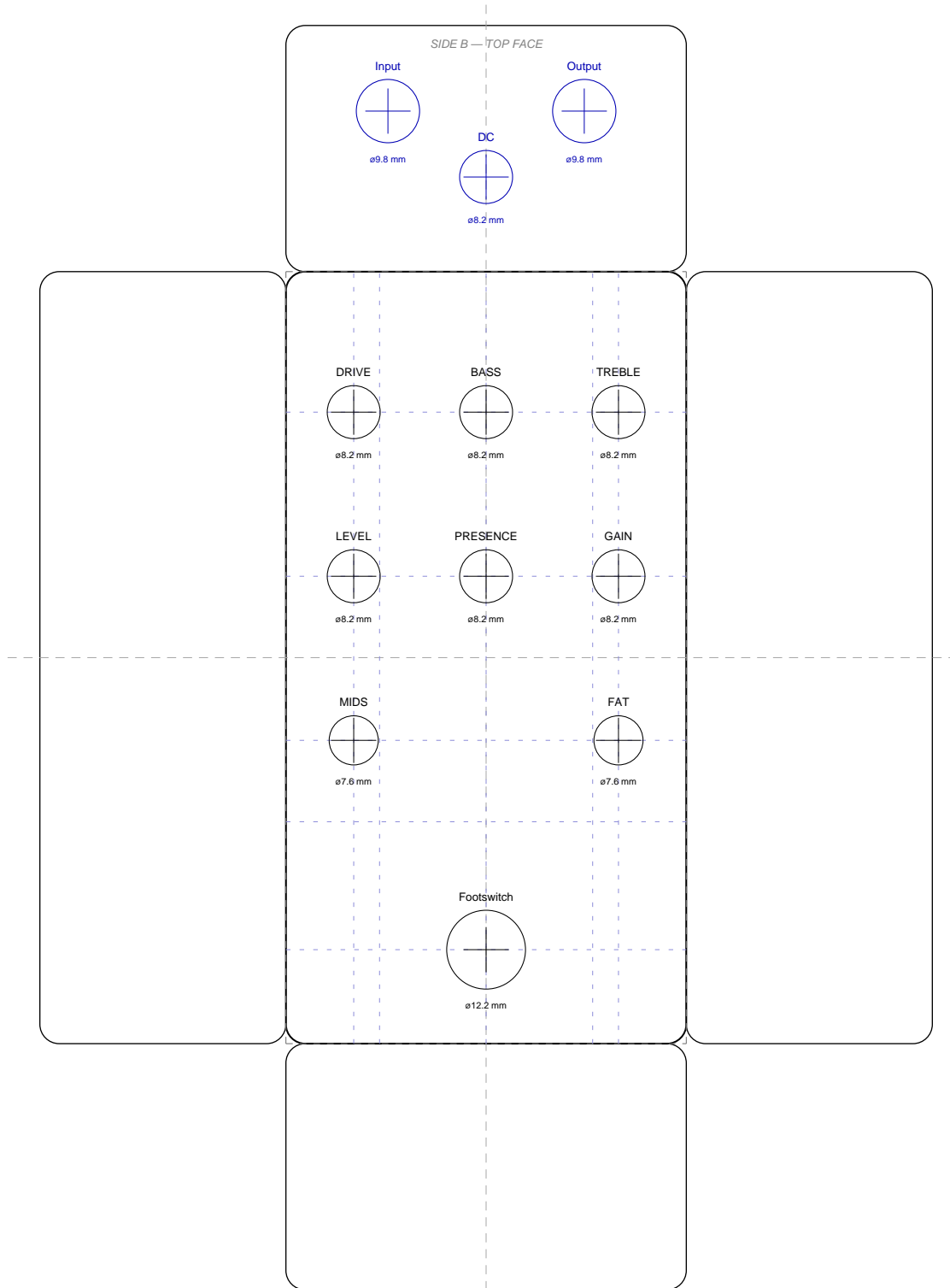
**Title:**

Size: USLetter    Date:  
 KiCad E.D.A. 10.0.1

**Rev:**  
 Id: 2/2

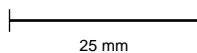
# Bloody Germanium Overdrive — Enclosure Drilling Template

125B (62x120 mm) enclosure



**PRINT AT 100% — DO NOT SCALE**

macOS: Print → Scale: 100% • Verify scale bar below measures exactly 25 mm before drilling



# Bloody Germanium Overdrive

## Tayda Drill Manifest — 125B (62×120 mm)

X/Y are mm from the centre of each face (positive Y = toward front). Side A = front face. Side B = top face. Side C = left face (rotated -R enclosures).

| SIDE | DIAMETER (mm) | X (mm) | Y (mm) | LABEL      |
|------|---------------|--------|--------|------------|
| A    | 8.2           | 0.0    | 38.0   | BASS       |
| A    | 8.2           | 20.5   | 38.0   | TREBLE     |
| A    | 8.2           | -20.5  | 38.0   | DRIVE      |
| A    | 8.2           | 20.5   | 12.6   | GAIN       |
| A    | 8.2           | 0.0    | 12.6   | PRESENCE   |
| A    | 8.2           | -20.5  | 12.6   | LEVEL      |
| A    | 7.6           | -20.5  | -12.8  | MIDS       |
| A    | 7.6           | 20.5   | -12.8  | FAT        |
| A    | 12.2          | 0.0    | -45.2  | Footswitch |
| B    | 8.2           | 0.0    | 4.4    | DC         |
| B    | 9.8           | -15.2  | -5.8   | Input      |
| B    | 9.8           | 15.2   | -5.8   | Output     |